



Mobile Printer

Driver installation instructions

Rongta Technology (Xiamen) Group Co., Ltd.

www.rongtatech.com

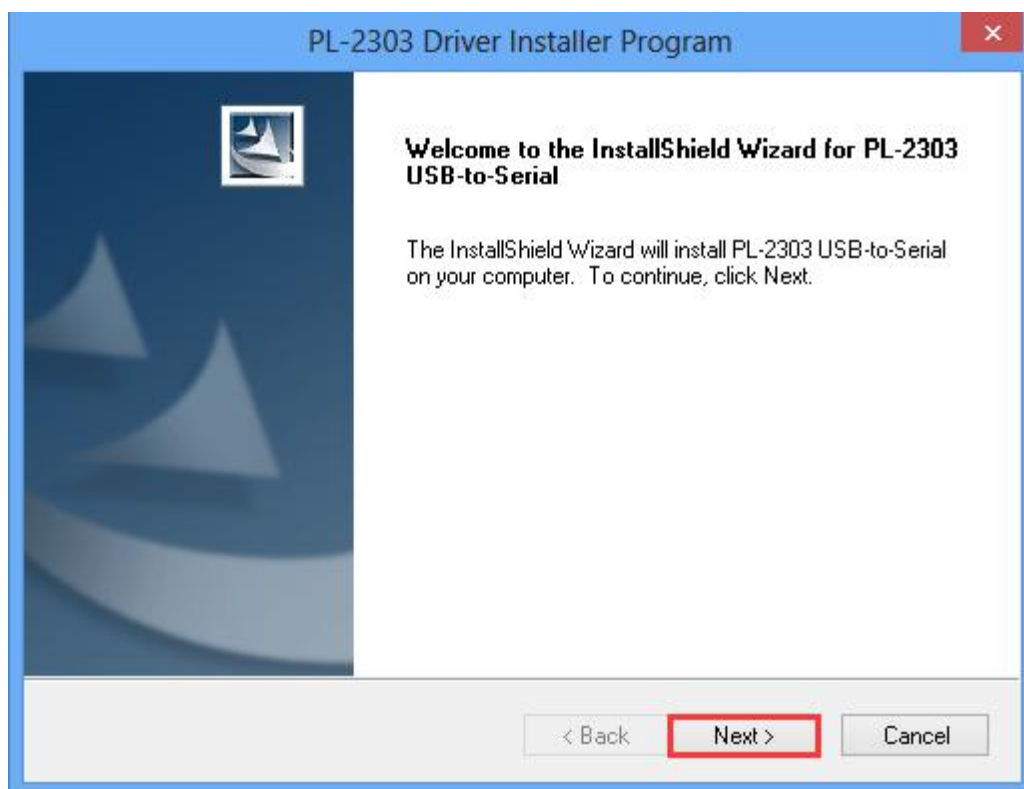
1.Virtual Driver Installation of USB to Serial Port

1.1 First connect the mobile printer to PC via USB to serial port, and turn on the printer;

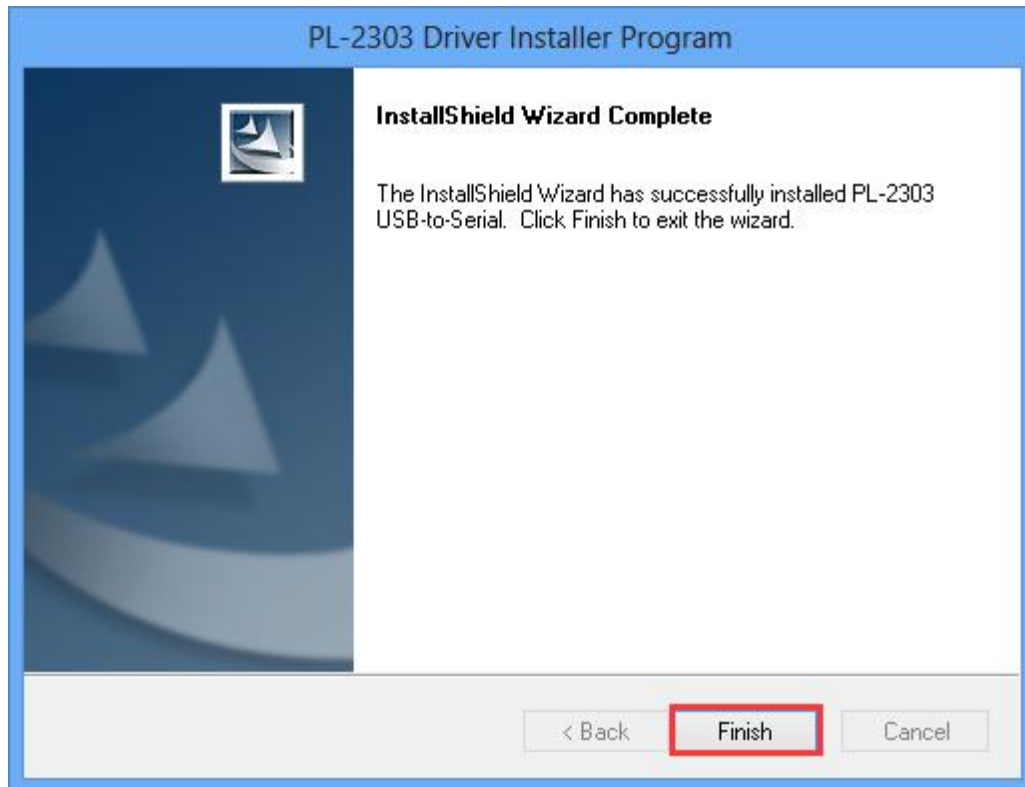
1.2 Double click USB to Serial Port tool;



1.3 Click “Next”;



1.4 Finally, click “Finish”. At this point, USB to Serial Port driver has been installed.



2.Windows Driver installation

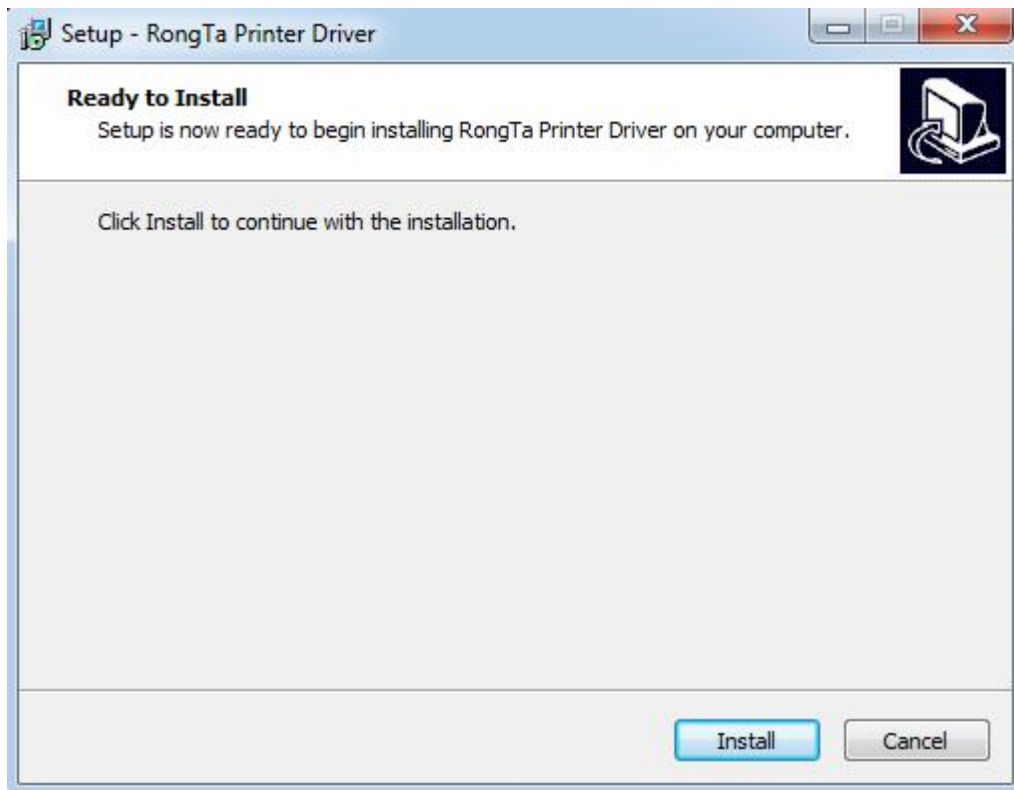
2.1 Run  RongTaDriverInstall to install the printer driver.

The dialog box shown in the figure below pops up:



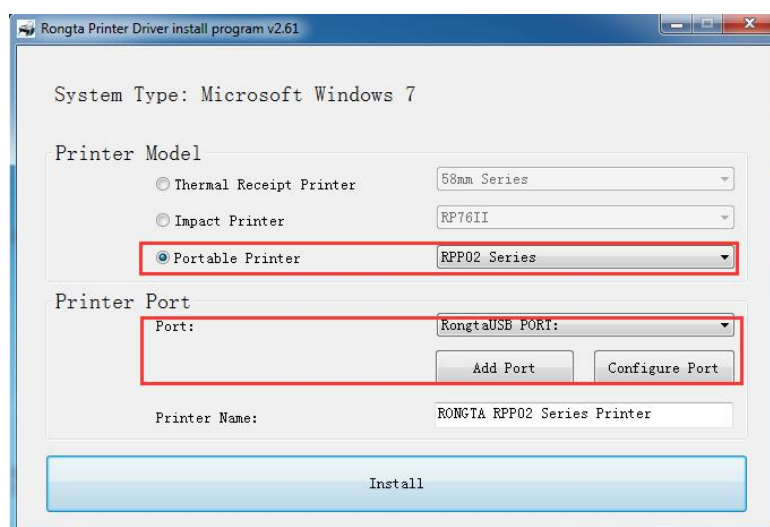
Select the installation language and click “OK”, as shown in the figure above.

2.2 The dialog box shown in the figure below pops up:

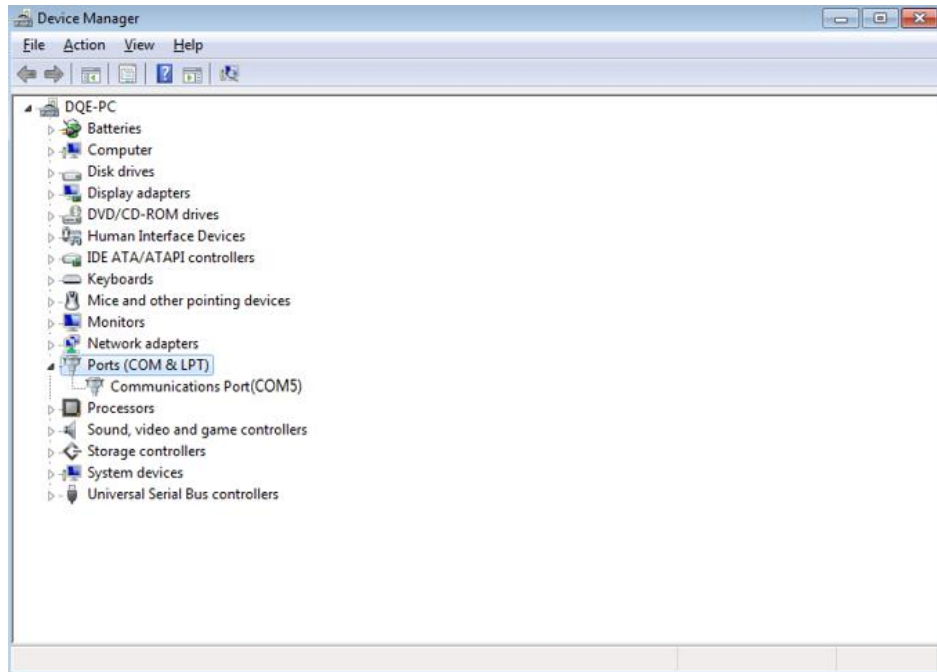


Click “Install”, as shown in the figure above.

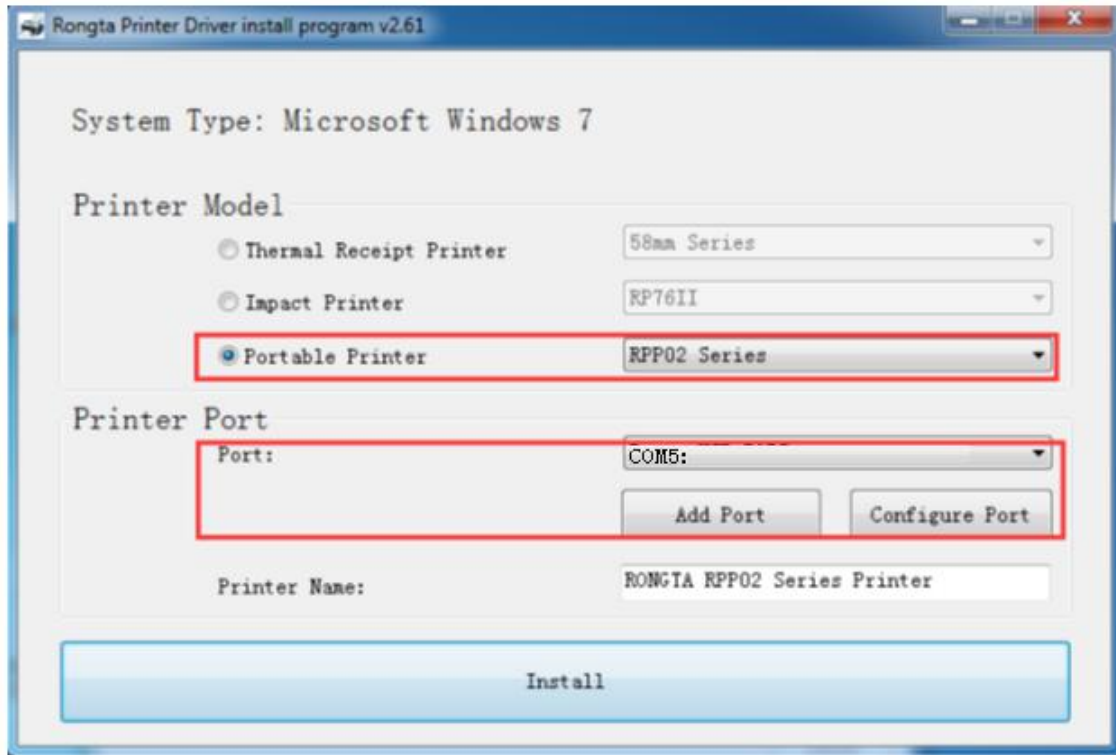
2.3 The dialog box shown in the figure below pops up:



In the Printer Type, select the mobile printer “RPP02 Series”, and then select the printer port. If the printer is connected to the computer via USB to Serial Port, open the “Files Explorer” and find the Com number of the corresponding USB to serial port, such as com 5;

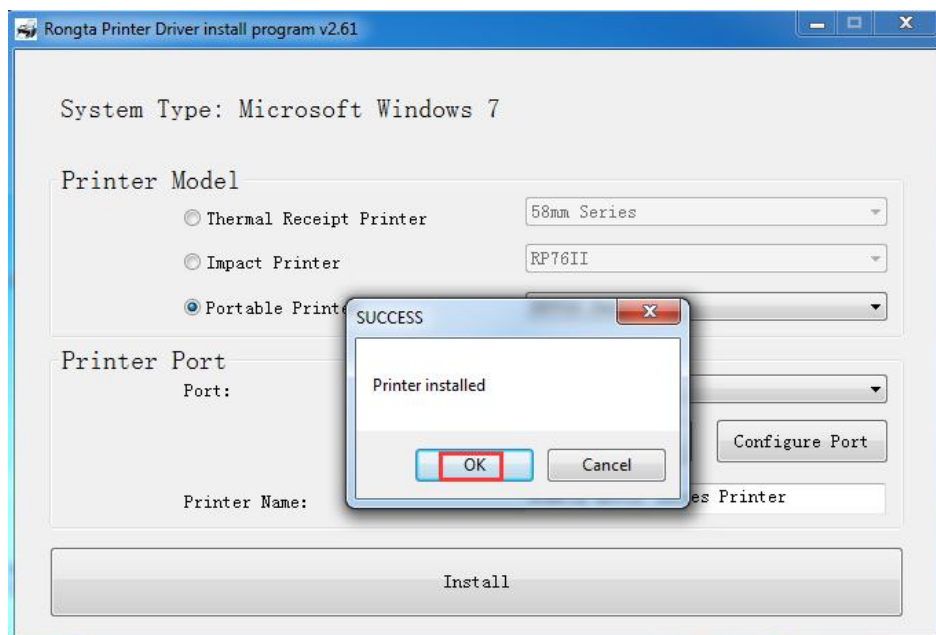


Then select com5 in the Printer Port, and select “Configuration Port” of com5 (the default baud rate of USB to serial port is 9600) as shown in the figure below:



Finally click “Install”.

2.4 Then the dialog box shown in the figure below pops up:



Click “OK” first, then click “Exit”, as shown in the figure above.

2.5 Finally, click “Finish (F)” as shown in the figure below.



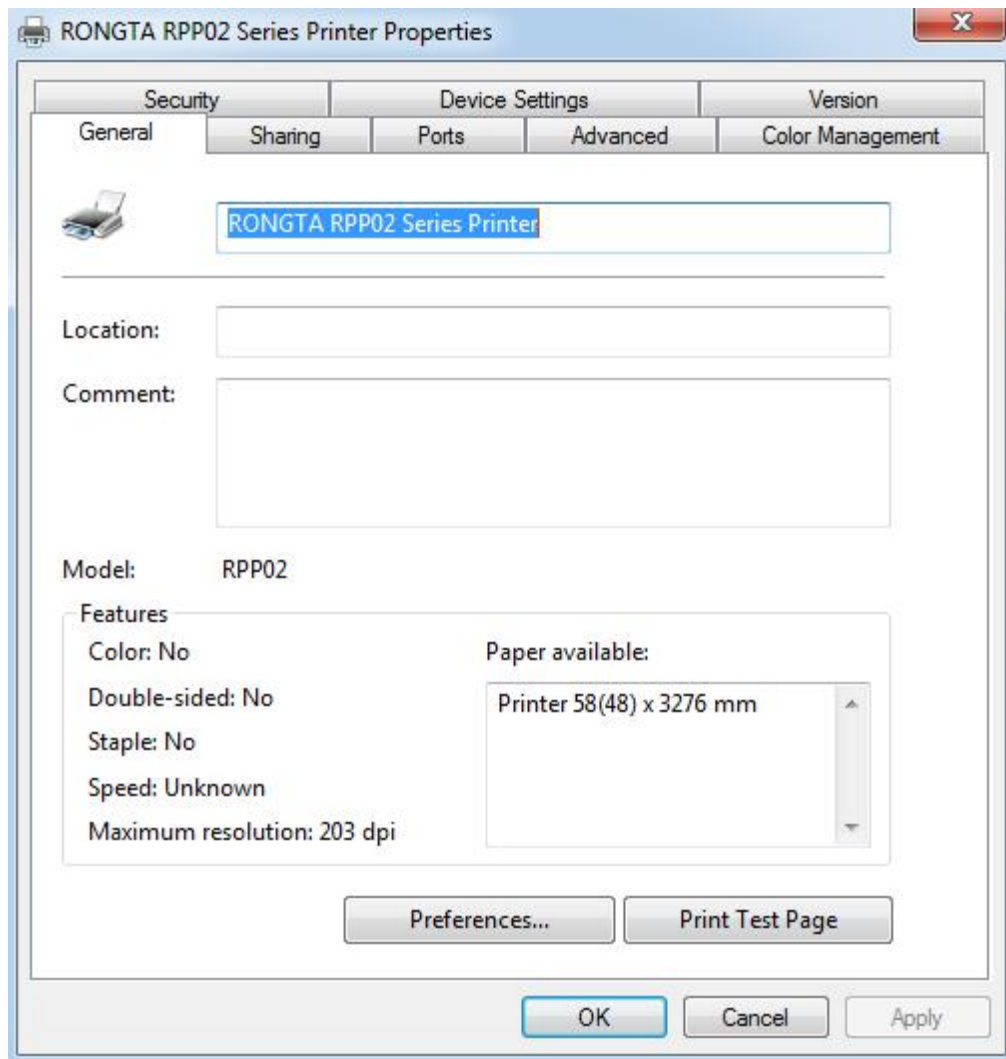
At this point, the printer driver is installed.

3.Set and Test the Printer

3.1 Set Printer Properties

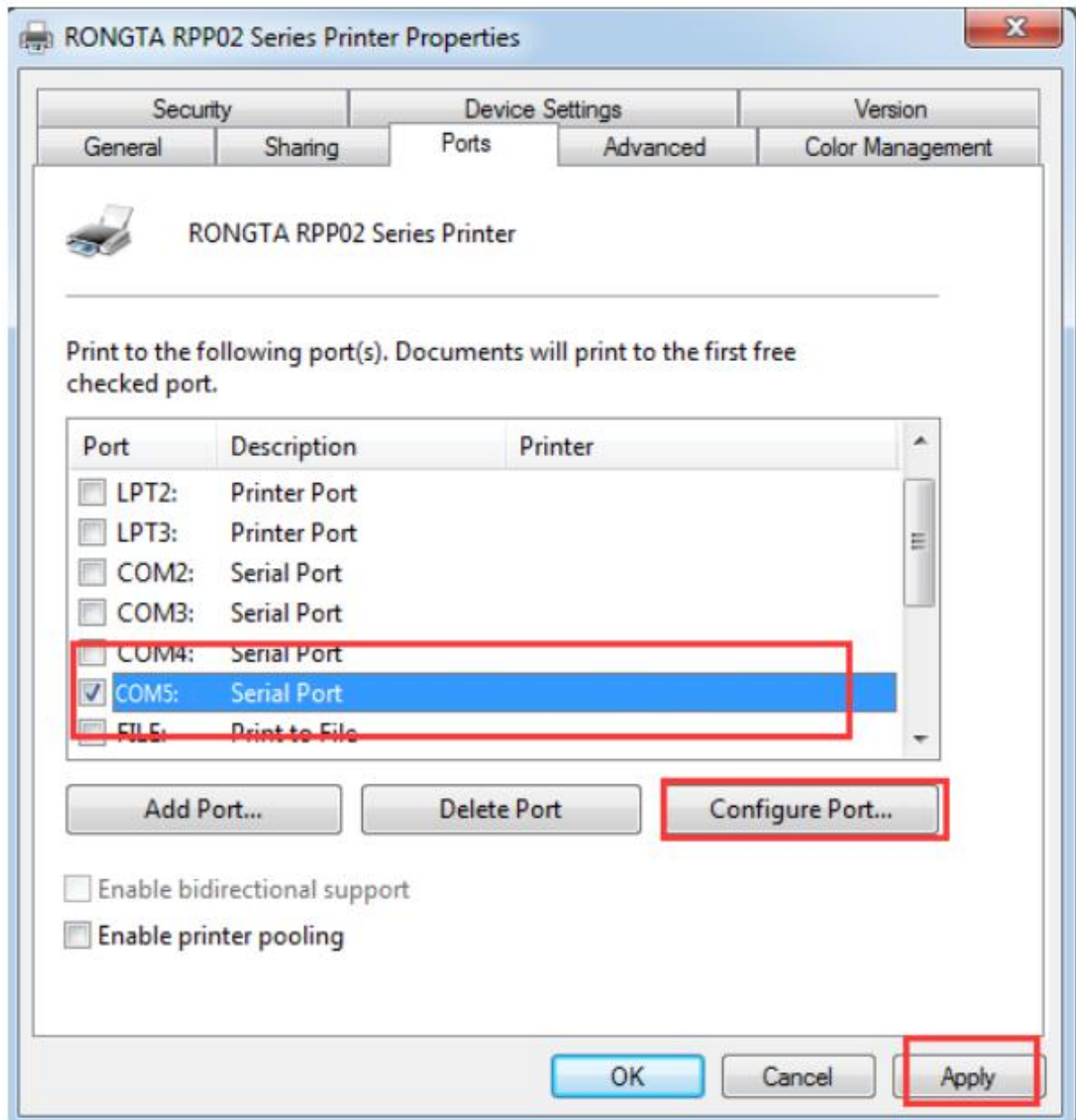
After installing the printer driver, view “Start”-> “Control Panel”-“Printer and Fax”-> “Printer Properties” of RONGTA RPP02 Series Printer.

The "Printer Properties" window will pop up, as shown in the figure below:

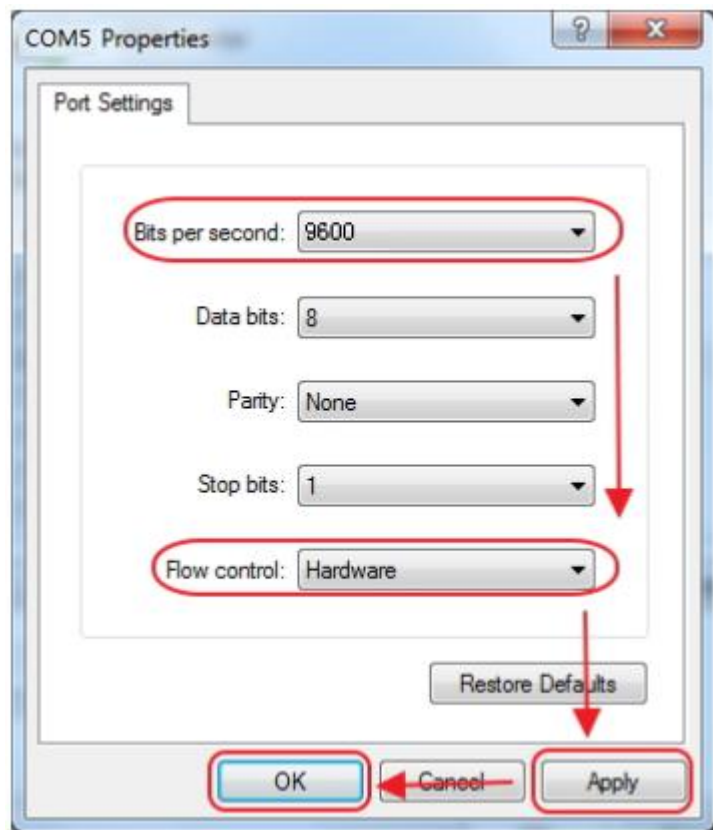


3.2 Print Test Page via Serial Port

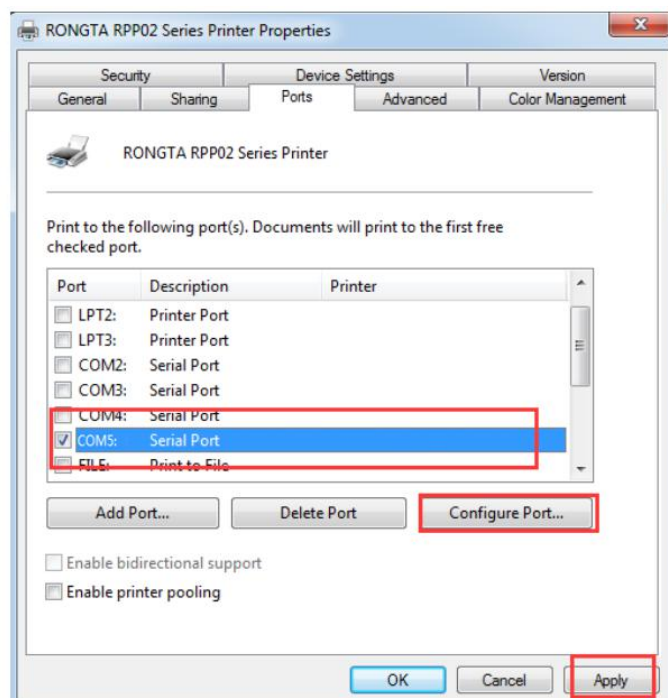
Select "Port" as shown in the figure above. As shown in the figure below:



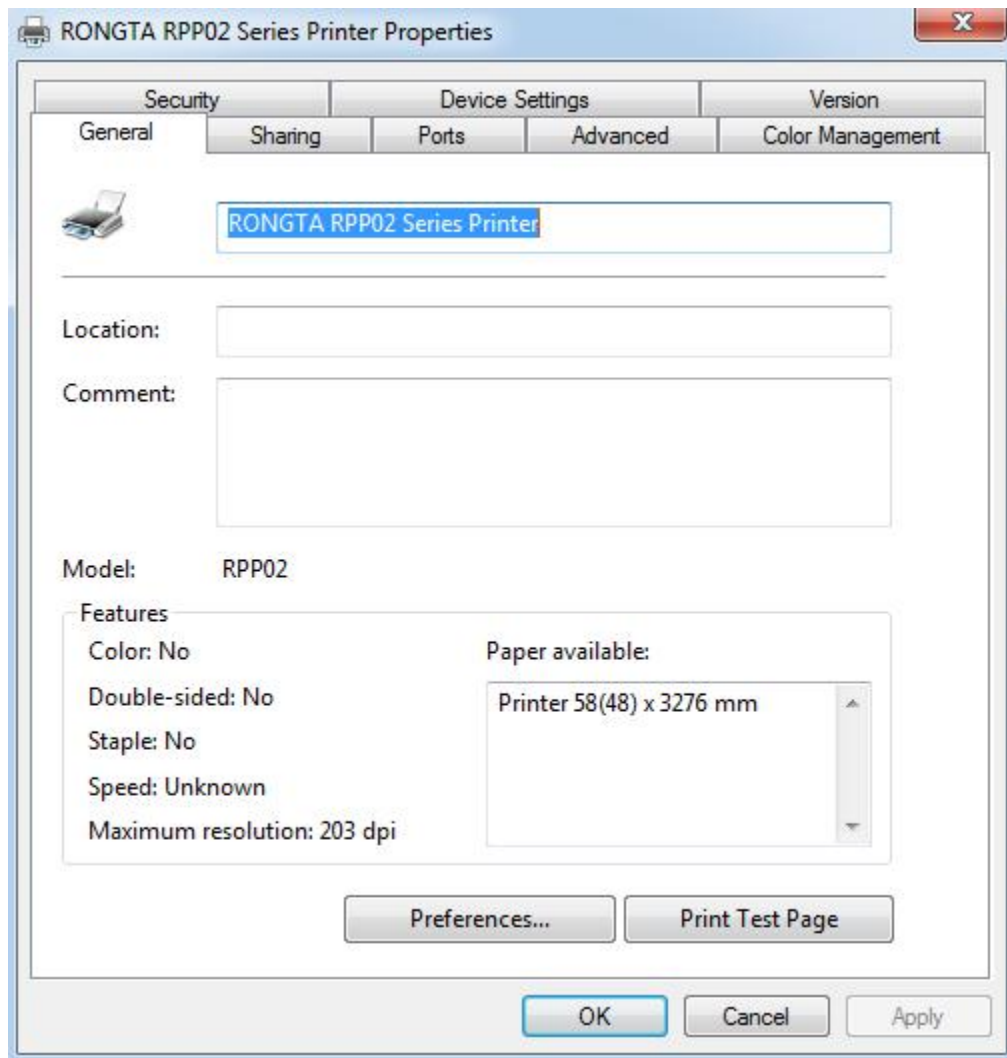
Select the corresponding serial port (take COM5 as an example), select COM5, and then select the configuration port. The following dialog box appears: Set the value of bits per second to be the same as the printer baud rate. If the baud rate is 9600, then set the value of bits per




After settings are completed, click “OK” to save the settings. Back to the "Printer Properties" window, select “Apply (A)”, as shown in the figure below:



After the serial port configuration is completed, select “General”, as shown in the figure below:



Select “Print Test Page (T)”. If the test page can be successfully printed, it means the printer has been connected to the PC and configured correctly, and the printer port can be used normally.



Warning: The contents of this Manual shall not be changed at will without consent. Rongta Technology (Xiamen) Group Co., Ltd reserves the right to change the product in terms of technologies, parts, software and hardware. Please contact the dealer for further information of the product. No part of this Manual shall be reproduced or spread in any form or by any means without permission.



Rongta Technology (Xiamen) Group Co., Ltd.

ADD: No. 889 Xinmin Avenue, Tongan District, Xiamen, China

WEB: www.rongtatech.com

TEL: 0086-592-5666129 **FAX:** 0086-592-5659169